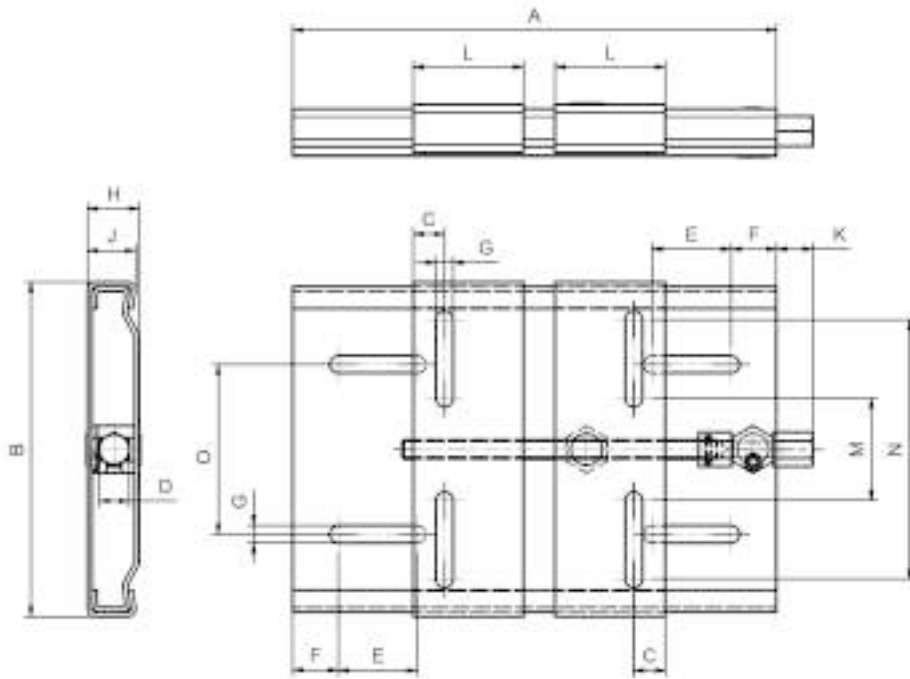


SLITTE TENDI CINGHIE *MOTOR BASES*



DIMENSIONI / DIMENSIONS

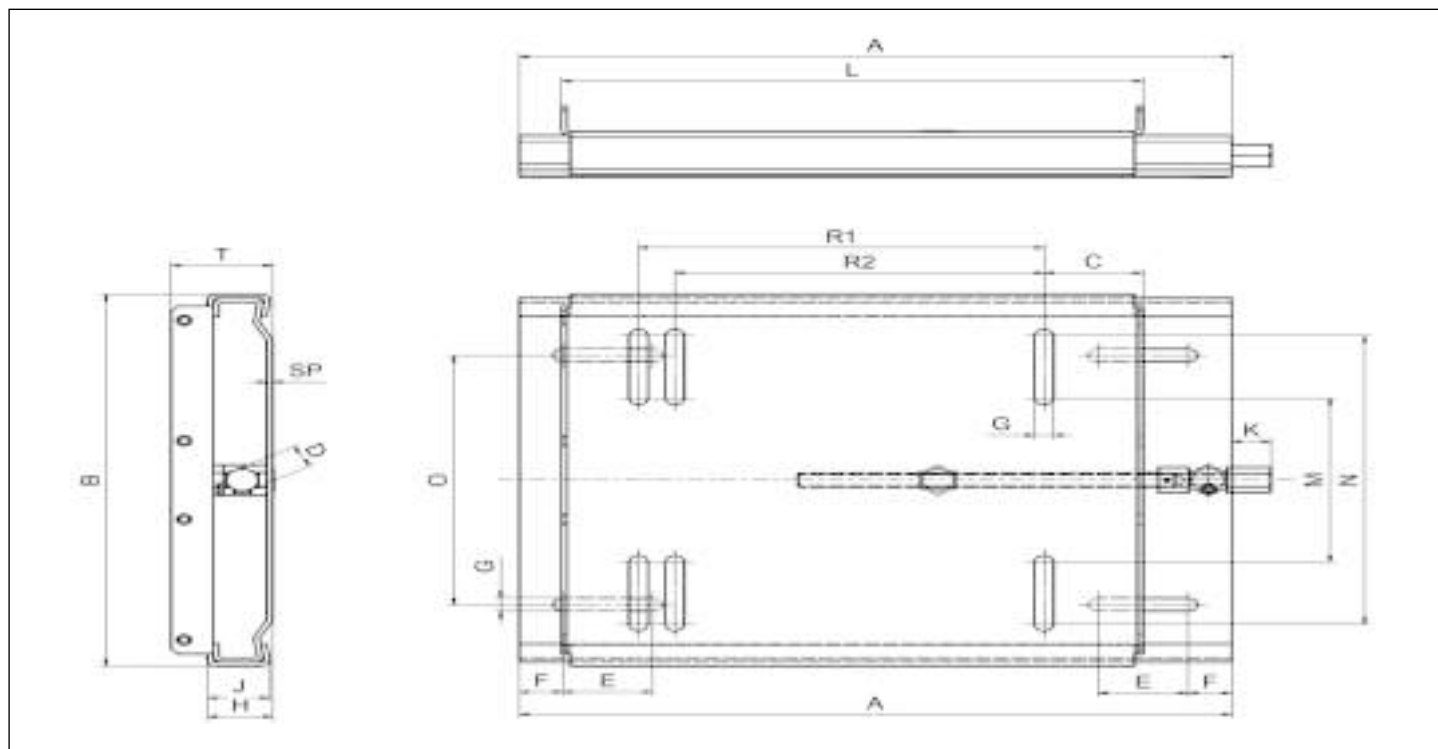


SLITTA MOTOR BASES	Motori I.E.C. Motors	A	B	C	D	E	F	G	H	J	K	L	M	N	O	SP	weight kg
SN 80	63-80	210	150	20	19	36	25	11	33	31	25	65	30	90	80	3	2,5
SN 100	63-100	270	195	20	19	50	25	11	33	31	25	70	43	143	98	3	2,8
SN 112	90-112	307	213	20	19	50	29	11	33	31	25	70	65	165	108	3	3,4
SN 132/1	90-132	380	240	27	19	54	29	13	33	31	30	70	76	184	165	3	4,7
SN 132/2	90-160M	340	290	27	22	63	29	13	41	37	30	95	90	214	165	4	6,4
SN 132/R	90-160M	430	290	27	22	63	29	13	41	37	30	95	90	214	165	4	7,5
SN 180	160-180	490	370	40	22	62	30	15	41	37	30	110	163	287	247	4	11

SLITTA	I.E.C.	56	63	71	80	90S	90L	100	112	132S	132M	160M	160L	180
SN 80	R	60	50	40	25									
SN 100	R		110	98	90	70	70	50	20					
SN 112	R			130	120	107	107	85	57	35				
SN 132/1	R					165	165	145	116	90	90			
SN 132/2	R					126	126	105	76	50	50			
SN 132/R	R					216	216	195	165	140	140			
SN 180	R											130	130	105

R = corsa utile / max distance obtainable

SLITTE TENDITRICI COMPATTE / MOTOR BASES



SLITTA MOTOR BASE	Motori I.E.C. Motors	A	B	C	D	E	F	G	H	K	L	M	N	O	R1	R2	T	SP	weight kg
SLC 160/180 MP	160 - 180	490	370	50	22	62	30	13	40	30	380	163	287	248	279	254	30	4	18
SLC 200/225 MP	200 - 225	585	450	58	22	60	30	17	50	30	468	247	351	300	356	318	30	5	32
SLC 250 MP	250	600	470	54	22	60	30	22	65	30	515	329	702	320	406		30	5	37
SLC 280 MP	280	735	570	63	22	70	30	22	65	30	585	320	460	420	457		30	5	51
SLC 315 MP	315	800	760	72,5	22	80	30	30	80	30	653	400	556	520	508		30	5	73

SLITTA / MOTOR BASE	I.E.C.	160	180	200	225	250	280	315
SLC 160/180 MP	R	180						
SLC 200/225 MP	R	195						
SLC 250 MP	R	195						
SLC 280 MP	R	250						
SLC 315 MP	R	280						

R = corsa utile / max distance obtainable